

PRODUCT INFORMATION



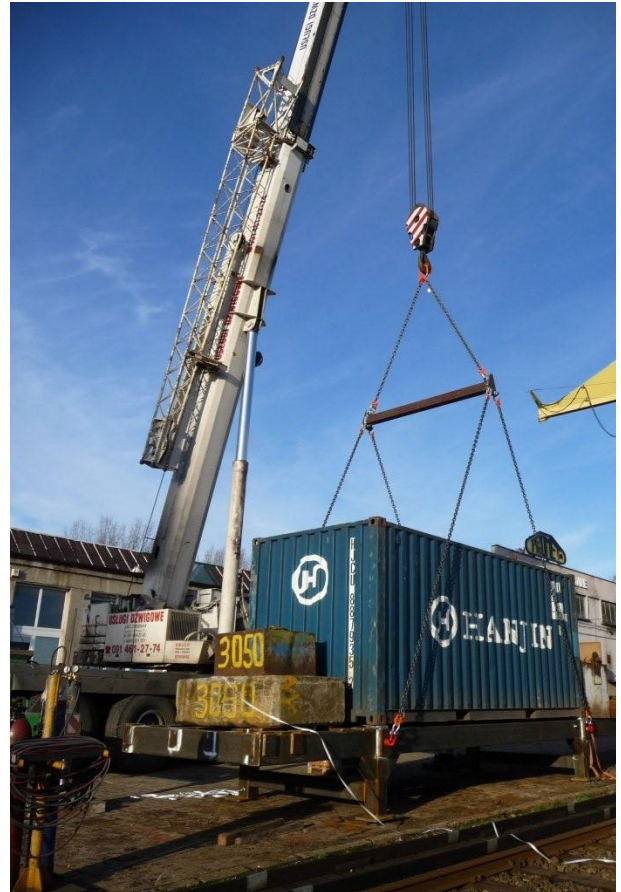
MULTIPURPOSE SPREADER BEAMS / FRAMES



Spreader beam for PCM Module



Certified Lifting Frame WLL 30,000 kg



Spreader beam during lifting test in accordance with "Arbeidstilsynets forskrift 522". Test lift was 40800 kg.

Description:

ATC design and produce a wide range of lifting equipment, for example spreader beams, multipurpose spreader frames etc.

Lifting equipment is normally designed in accordance with NORSOK R-CR-002, but can also be custom designed to meet clients specific requirements for both offshore and onshore use.

The pictures above show both a typical lifting beam and a multipurpose lifting frame.