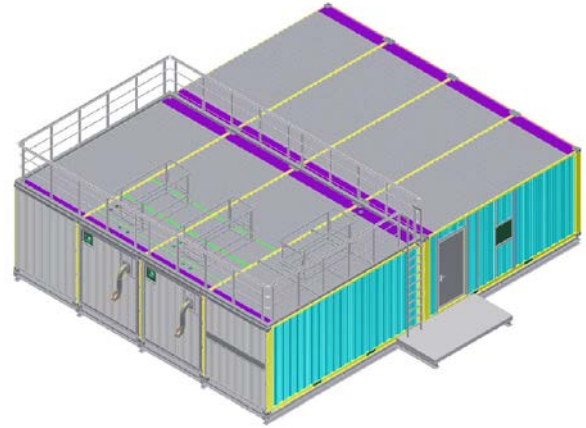
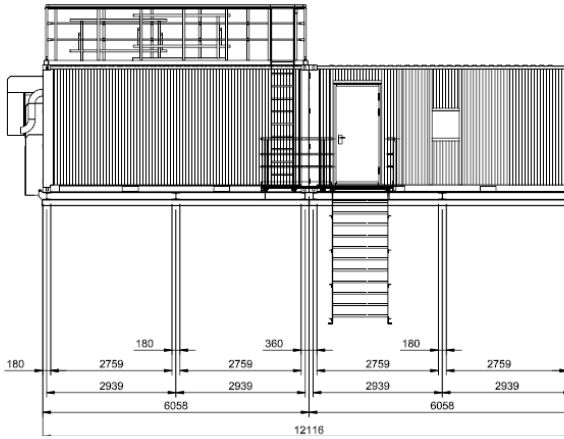


JOB REPORT



POWER PLANT – TROLL ANTARKTIS



Year : 2007
Project Name : Troll, Antarktis
Operator / Client : Unspecified
ATC project no. : 1853

Size (L x W x H mm) : 6058 x 2438 x 2896 (Each container)
Materials : 4 mm Mild Steel, painted.

Project Description / Challenges:

The challenge was to provide a “building” which should provide electric power and heat to a scientific camp in the Troll area of the Antarktis.

Due to the intense cold, extreme care had to be taken when designing and installing the insulation and cladding in order to avoid “cold Bridges”.

The containers had to be transported over the ice, then bolted together to form a complete building for the customer to install 2 giesel generator sets, fuel tanks, UPS and a battery bank, electrical switchgear and a small office.



JOB REPORT



Scope of Work:

ATC's scope included detailed design, fabrication and outfitting and testing of eight 20 foot ISO containers, with special fixings for bolting them together.

2 external doors with double sealing and 7 internal doors were part of ATC's scope.

The containers had a special paint finish and Bithumen was applied under the floor.

An ATC technician supervised the installation work in the Antarktis.



Assembly work nearing completion