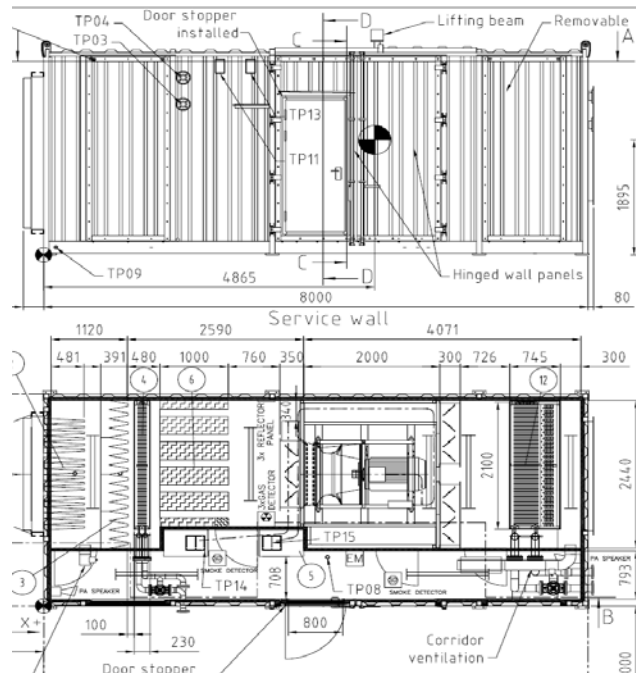


JOB REPORT



STATFJORD LATELIFE CONTAINER



- Year** : 2006
Project Name : Statfjord Latelife
Operator / Client : Statoil
ATC project no. : 1523
- Size (L x W x H mm)** : 8000 x 3500 x 3400
Weight (kg) : 15,700, including all equipment
Materials : Complete container AISI 316L
Classification : A0

Project Description / Challenges

As part of the modifications to Statfjord B and C, a new AHU was supplied installed in a container. The container was positioned in an extremely exposed part of an existing platform, where space was very restricted and a max lift of 17,000 kg was available on the platform crane. Access in the container to maintain and inspect equipment such as fans, dampers and filters was required as well as service space to completely remove major items such as fans / motors.

JOB REPORT



Scope of Work:

Trans Constructions scope of work involved detailed layout and external interface, structural design, including calculations, installation of components and assisting of the full performance test.

The container included intake drop separator, Fans, coils (heating and cooling), filters, Dampers, as well as frequency control panels, 3 port valves with pneumatic actuators, all piped up to the outside of the container, making a simple client interface.

Lighting, smoke and gas detection, loud Speaker system and alarms was also part of the supply.



Internal corridor, piping and vent supply.



Completed container loaded onto transport ready for delivery to client