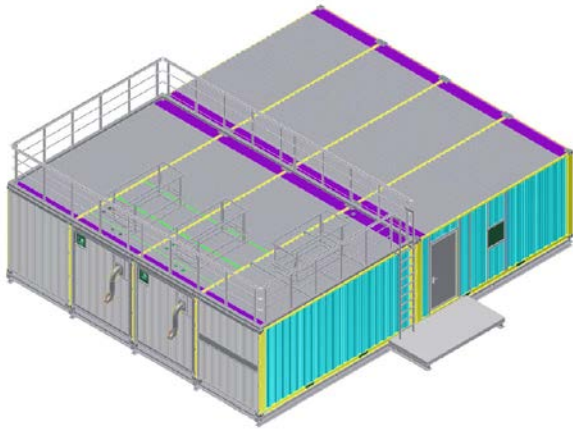


PRODUCT INFORMATION



POWER PLANT MODULES



Description:

For this type of application, ATC build together standard containers into a complete building.

This example is from the Antarktis, for a power plant generating electrical power and heat for a scientific camp.

ATC supplied eight 20 foot ISO containers, modified with external and internal doors and fixings to enable them to be joined together. A lot of care has been taken towards insulating and cladding in order to avoid “cold bridges”. The “building” was manufactured, trial assembled and tested at Minnesund prior to shipping.

The containers were transported on the ice, one by one, and then bolted together. The “building” contains customer supplied equipment including two diesel generator sets, fuel tanks, UPS and battery bank, electrical switchgear and a small office.

As part of our Scope of work, an ATC technician took part in the assembly on site.

