

# COMPANY PRESENTATION



TRANS CONSTRUCTION AS

## CONTAINERS, MODULES AND OTHER WELDED CONSTRUCTIONS FOR THE OFFSHORE AND ONSHORE INDUSTRY



**Trans Construction AS are a leading EPC contractor providing standard and customised container/module solutions and other types of constructions for a wide range of Offshore and Onshore projects.**

## **HISTORY:**

Established in 1976, 35 years experience performing many different types of projects from standard modules to fully tested turnkey solutions including instrumentation, Electro, Telecom, HVAC, piping and fire fighting systems.

## **LOCATION:**

Main administration, project management and fabrication facilities are situated in the Ørn Industrial area in Dal, 10 mins from the main Oslo Gardermoen airport. Production also on west coast of Norway and Poland.

## **QA and HSE:**

Trans Construction AS is certified according to ISO 9001:2008 and also qualified in the Achilles supplier database. Stringent HSE policy to create a healthy and safe work environment, reducing sick leave and work related accidents.

## **3 Main Business Areas**

### **Standard Container Solutions**

Standard modules often based on ISO 668 20, 30 and 40 foot freight sizes. Outfitting to customers specifications.

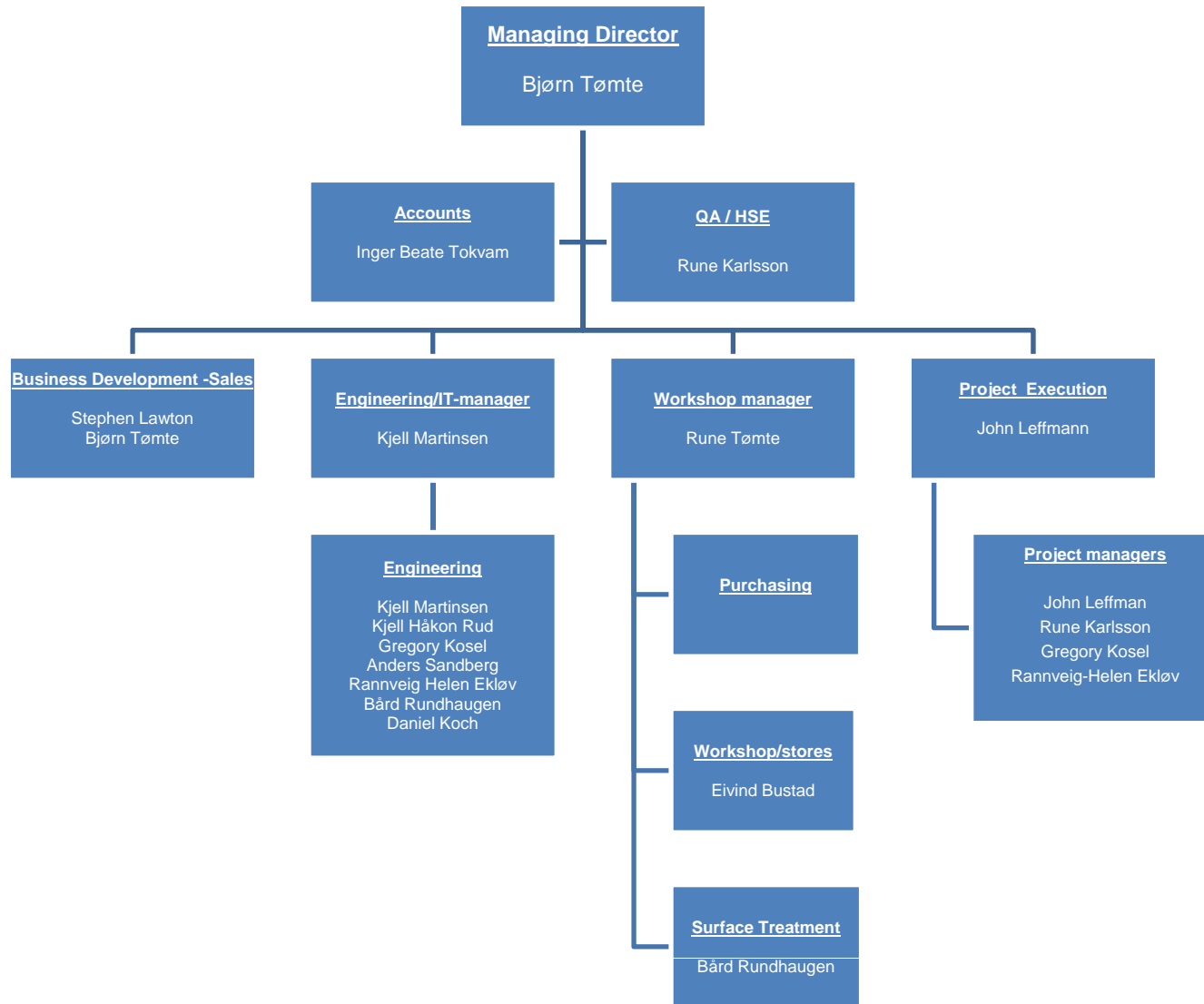
### **Oversized/Customised Container Solutions**

Custom-built modules specifically designed to meet the customers own requirements.

### **Welded constructions**

Additional forms of welded constructions, ranging from pump skids, control cabins, noise enclosures, access platforms and spreader frames.

# Company Organisation Chart



## Materials:

- Mild steel
- Stainless steel
- Aluminum

## Certification:

- 3rd party certification of structural calc.
- European Welding Engineers.
- Certified Welders
- Certified Welding Procedures, including NORSOK
- Weld testing NDE/NDT
- Certification for offshore lifting DNV 2,7-1 and DNV 2,7-3
- Certificates for Offshore work.

## Engineering

### 3D Design:

- All new projects are designed using Autodesk Inventor

### 3D Analyses:

- If relevant will we perform a 3D analyses using STAAD Pro

### Documentation:

- We use ProArc to keep track of our documentation
- Normal documentation follows NS5820 and NORSOK.

### MC and Testing:

- Mechanical completion and testing in accordance with project requirements.

## Outfitting

- Windows and doors + emergency hatches to specific client requirements
- Insulation, cladding, noise reduction and fireproofing.
- Different types of floor covering, Vinyl antistatic or regular, aluminum or steel with or without antiskid.
- Pipe /Ventilation penetrations.
- Outfitting, including furniture to clients specification.
- Internal Electrical installation with simple hook up via MCT's.
- HVAC, design, supply and installation
- Telecom supply + Installation.
- Fire and gas/Instrumentation
- Fire Fighting(Sprinkler systems)
- Commissioning

# TYPICAL PRODUCTS – Standard Container Solutions



CERTIFIED IN ACCORDANCE WITH EN. 12079 / DNV 2.7-1

Size ( L x W x H mm)	Type (Foot)	Max Gross weight
2991 x 2438 x 2800	10'	10 T
2991 x 2438 x 2850	10'	16 T
6058 x 2438 x 2800	20'	10T
6058 x 2438 x 3000	20'	14,3T
6058 x 2438 x 2850	20'	16T (CSC approved)
6058 x 2438 x 3065	20'	24T



20' Container, modified



20' Trafo Container with Ventilation unit on roof



Standard 10' Containers to DNV 2.7-1



20' storage container for Lifting equipment



10' Offshore zone 2 Container



20' Workshop container with crane + HVAC

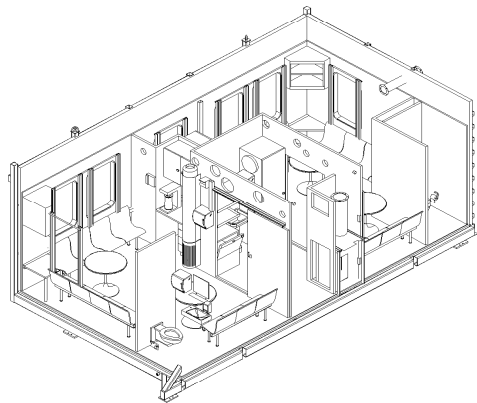


20' Offshore workshop /Service Container

# TYPICAL PRODUCTS – Custom Made Solutions



### Rest Container for Valhall



7700 x 4500 x 3400 mm, 15,900 kg.

5 separate rooms including smoking/non smoking, toilets + Kitchen

### Paint shop Container for Kristin



6000 x 2500 x 3300 mm, 10,160 kg.

The container included a paint spray cabinet, storage cabinets, 2 wash basins and an eye washer

### Laboratory Container for Volve



7600 x 3600 x 3480 mm, 20,700 kg.

Fully equipped to perform laboratory tests on oil and water streams and other samples essential to ensuring regular and safe running of equipment on the platform

# TYPICAL PRODUCTS – Other Welded Constructions



Custom built refrigerated storage container



Powerplant, made up of 8 containers, for use at South Pole



Control Cabin



Noise enclosure for Pumps, split into elements and delivered as flat pack.



Custom built basket for transport



Aluminium Access Platform

*If your company need a custom built unit, please contact us and we will try to help you to find a cost efficient solution to fulfill your requirements.*

# ***KEY COMPETENCE and FOCUS AREA***

## ***POWER CONTROL MODULES***

# Job Report - Pazflor Power Control Module (Angola)



**Total size** : 15500 x 7000 x 8000 (L x W x H)  
**Dry Weight** : 120 metric tonnes  
**Delivery** : 2009



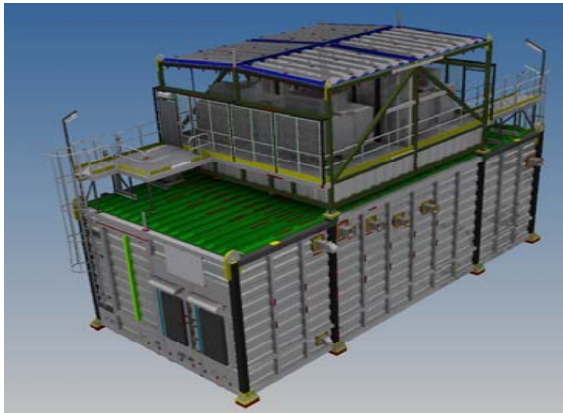
## Scope of supply included :

- All engineering including strength and weight calculations.
- Designed to withstand a blast load of 0.4 bar.
- Surface treatment according to Norsok M-501 system 1
- Design and installation of a complete fresh air and overpressure ventilation system, including 3x100 kw HVAC units to remove the heat load from customer equipment.
- Lifting equipment, roof railings, ladders.
- Full Offshore documentation according in accordance with clients requirements.
- Verification by DNV

# Job Report - Clov Power Control Module



**Total size** : 17850 x 8050 x 5900 (L x W x H)  
**Dry Weight** : 257 metric tonnes  
**Delivery** : 2012



3 D drawing of complete module



Skidding upper module into workshop



Transport to Norway for outfitting



Installation of HVAC Units



*Describe what you require and we will endeavour to design, fabricate, outfit, test and commission it in accordance with your specific requirements.*

*Remember : By outfitting the container / Module at ATC, you may be able to test the unit's full performance prior to delivery.*

## **TRANS CONSTRUCTION AS**



***Our expertise lies with modular containerized solutions***